



# INNKLUSION

ASSISTIVE SOLUTIONS  
FOR PEOPLE WITH DISABILITIES



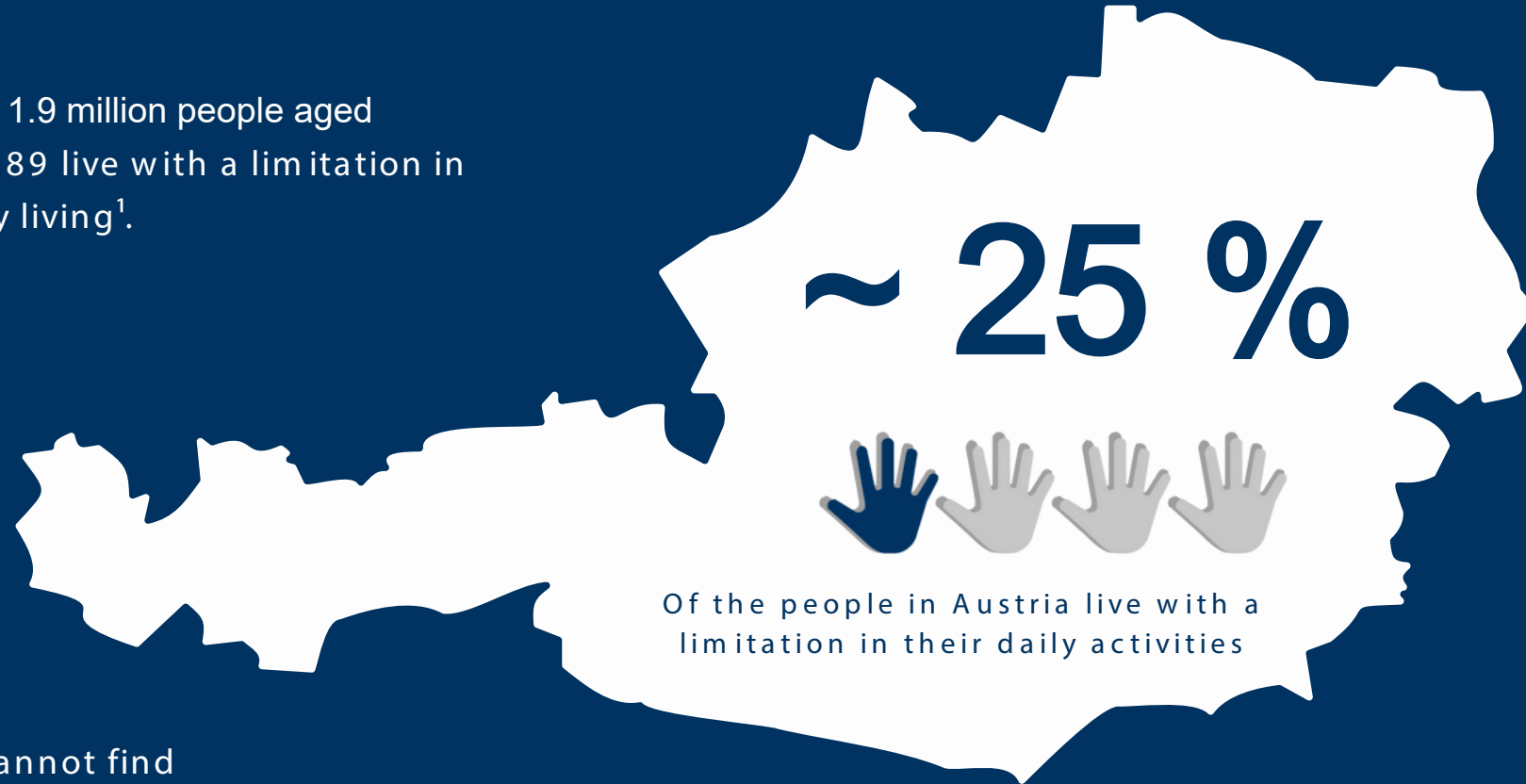
University of Innsbruck

Oliver Ott

# BACKGROUND

---

In Austria, around 1.9 million people aged between 15 and 89 live with a limitation in activities of daily living<sup>1</sup>.



Many of them cannot find suitable assistance solutions for their individual requirements.

<sup>1</sup>Bundesministerium Soziales, Gesundheit, Pflege und Konsumentenschutz:  
Bericht: Menschen mit Behinderungen in Österreich, Teil I, 2024.

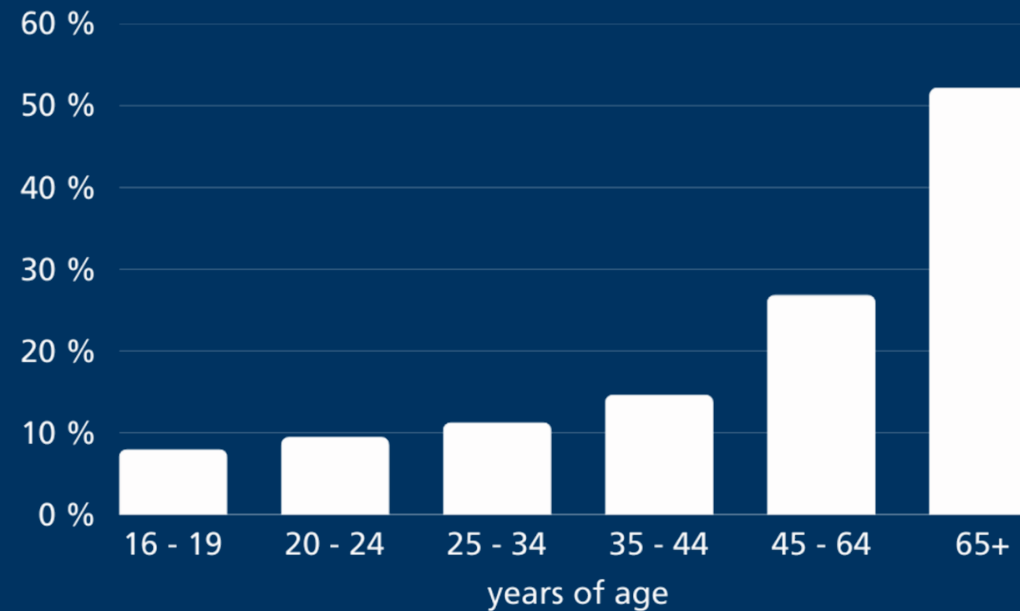
# SHARE OF POPULATION

---

The risk of developing a disability increases with age.

Most people are not born with a disability, but develop it later in life.<sup>2</sup>

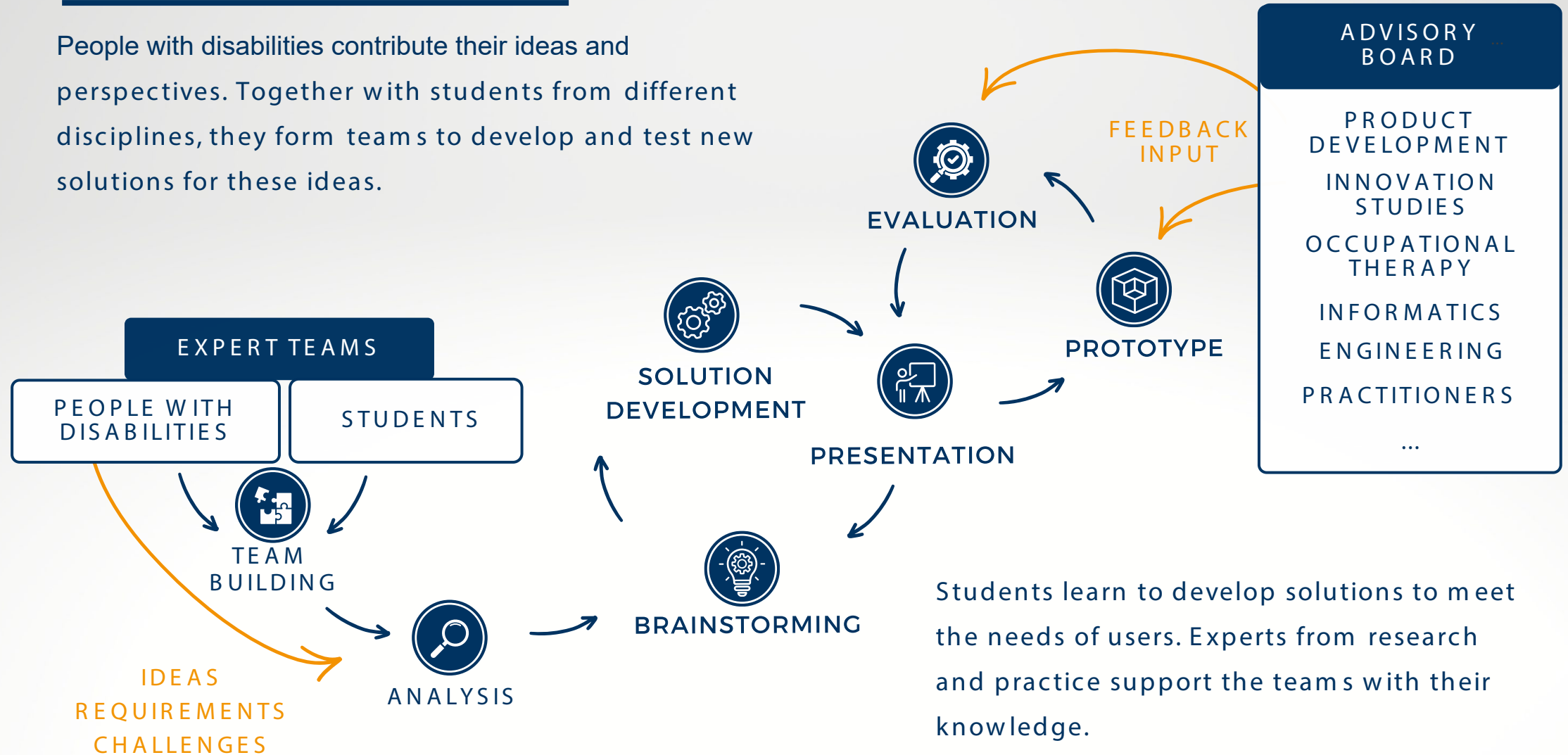
AGE PROPORTION OF  
PEOPLE WITH DISABILITIES  
IN THE EUROPEAN UNION



<sup>2</sup>Eurostat; Europäischer Rat (Juli, 2024) : Fakten und Zahlen zum Thema Behinderungen in der EU [https://doi.org/10.2908/HLTH\\_SILC\\_12](https://doi.org/10.2908/HLTH_SILC_12)

# APPROACH

People with disabilities contribute their ideas and perspectives. Together with students from different disciplines, they form teams to develop and test new solutions for these ideas.



Students learn to develop solutions to meet the needs of users. Experts from research and practice support the teams with their knowledge.

# PROTOLAB

---

In our Protolab, we develop assistance solutions and build prototypes using various modern machines. These include equipment for molds (cutting and milling), 3D printing, electronics, and textile processing. These versatile tools enable us to implement many different projects and create innovative solutions.

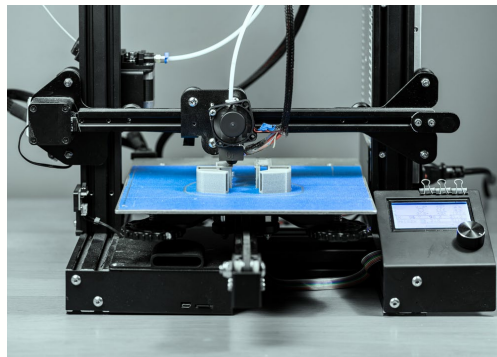
---

SHAPING



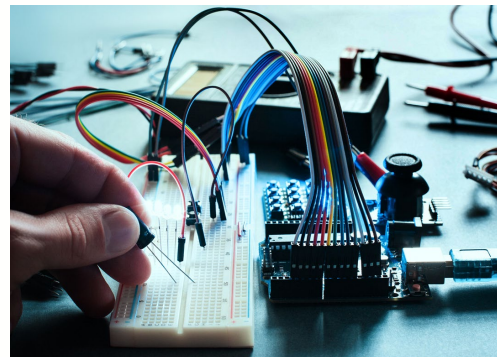
---

3D-PRINTING



---

ELECTRONICS



---

TEXTILES



# PROJECTS

---

We develop practical assistive solutions and new concepts to improve the quality of life of people with disabilities.

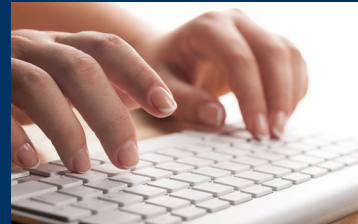
Our projects range from simple everyday assistive solutions to complex technical systems.

For a deeper insight,  
take a look here



## COMMUNICATION TOOL

A device that allows people with locked-in syndrome to communicate using finger movements.



## KEYBOARD STENCIL

A stencil that prevents unintentional entries and enables hand placement.



## SILENT HOUR

Measures such as dimmed lights and less noise for low-stimulus shopping.



## ACCESSIBLE MAP (PUBLIC TRANSPORT)

A map that provides information on the accessibility of public transport stations.

# TRANSFERABILITY

INNklusion promotes the transfer of knowledge through close cooperation with partner organizations and institutions in Innsbruck and Tyrol.

A strong network of associations, universities, and committed individuals enables the exchange of ideas and experience in order to develop innovative solutions together.





# CONTACT

---

## CHAIR OF PRODUCTION TECHNOLOGY

University of Innsbruck  
Technikerstraße 13, 2. OG  
6020 Innsbruck

E-Mail: [innklusion@uibk.ac.at](mailto:innklusion@uibk.ac.at)

For a deeper insight,  
take a look here

